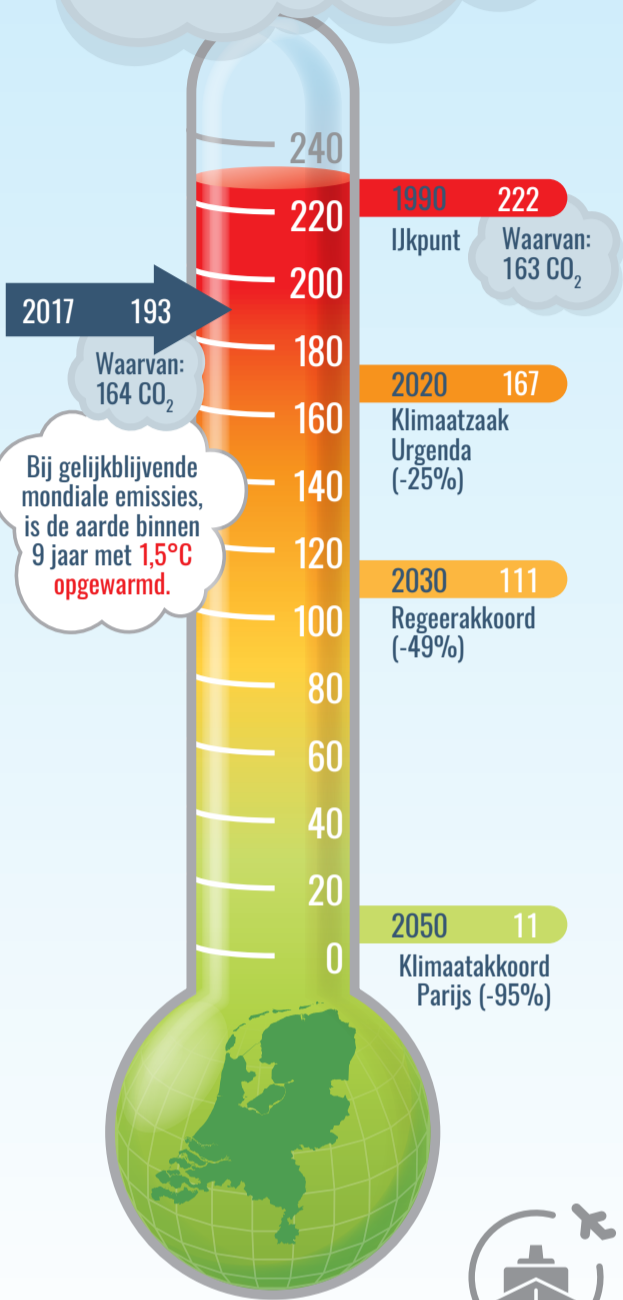


# Energie in Nederland 2019

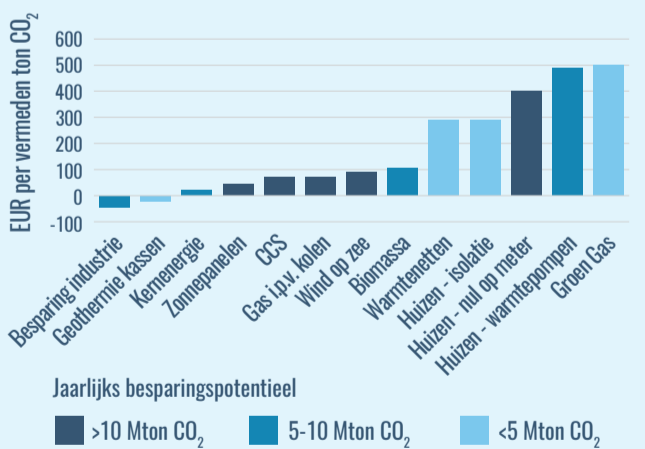
## Klimaatthermometer

### Broeikasgasemissies (Mton CO<sub>2</sub>-eq)



### Internationaal transport: 52 Mton CO<sub>2</sub><sup>1)</sup> (629 PJ)

### Kosteneffectiviteit en potentieel van CO<sub>2</sub>-besparingsmaatregelen in 2030



## Conversies



1 kWh = 3,6 MJ  
 20 magnetronmaaltijden



1 PJ = 0,28 TWh  
 1 Tesla 35 duizend keer de wereld rond

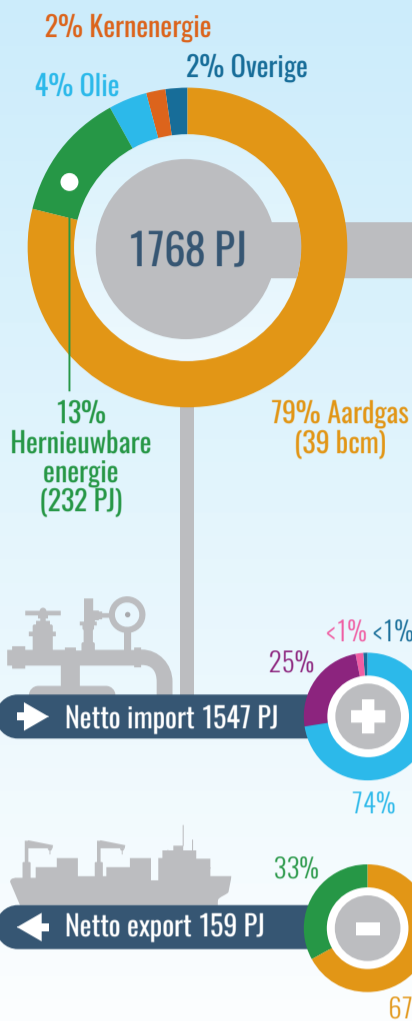


1 bcm = 35 PJ  
 3 miljard keer warm douchen

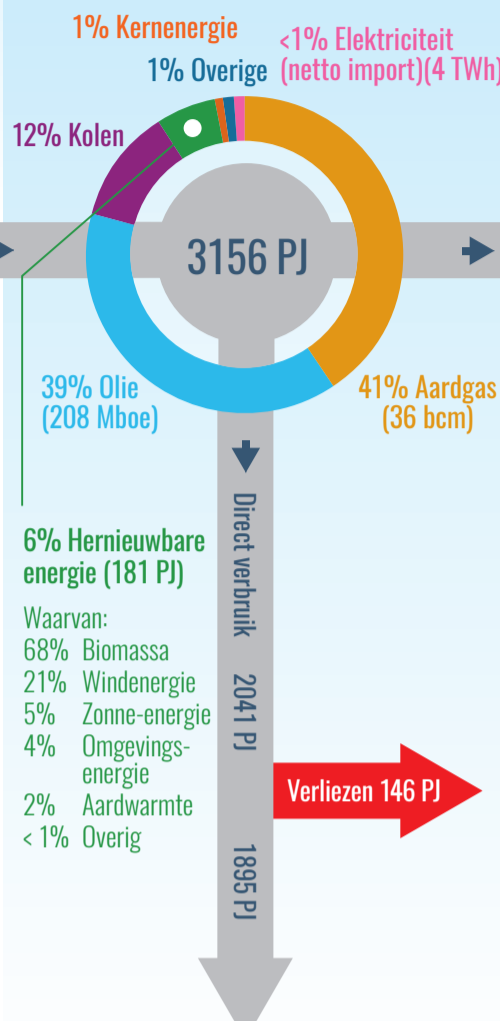
ebn

energie in nederland.nl

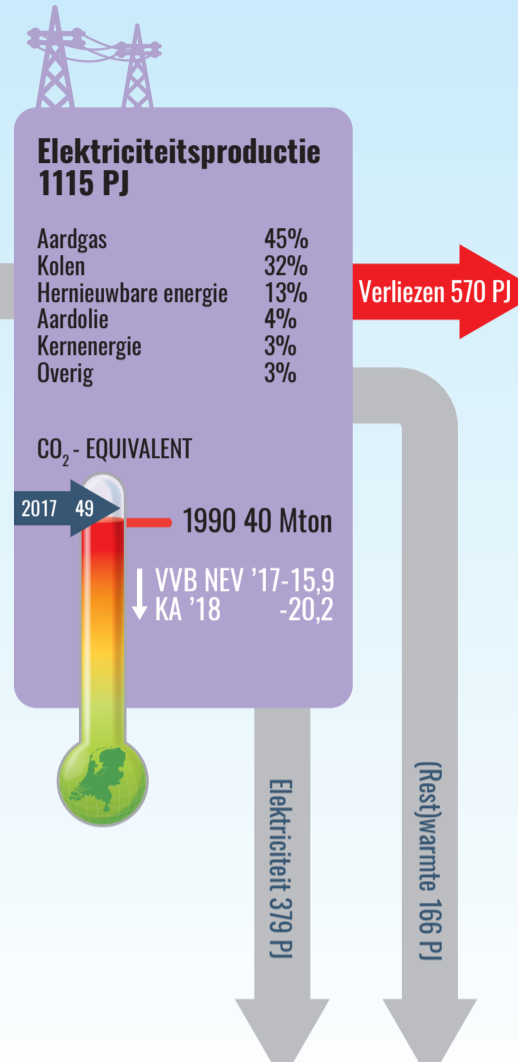
## Productie



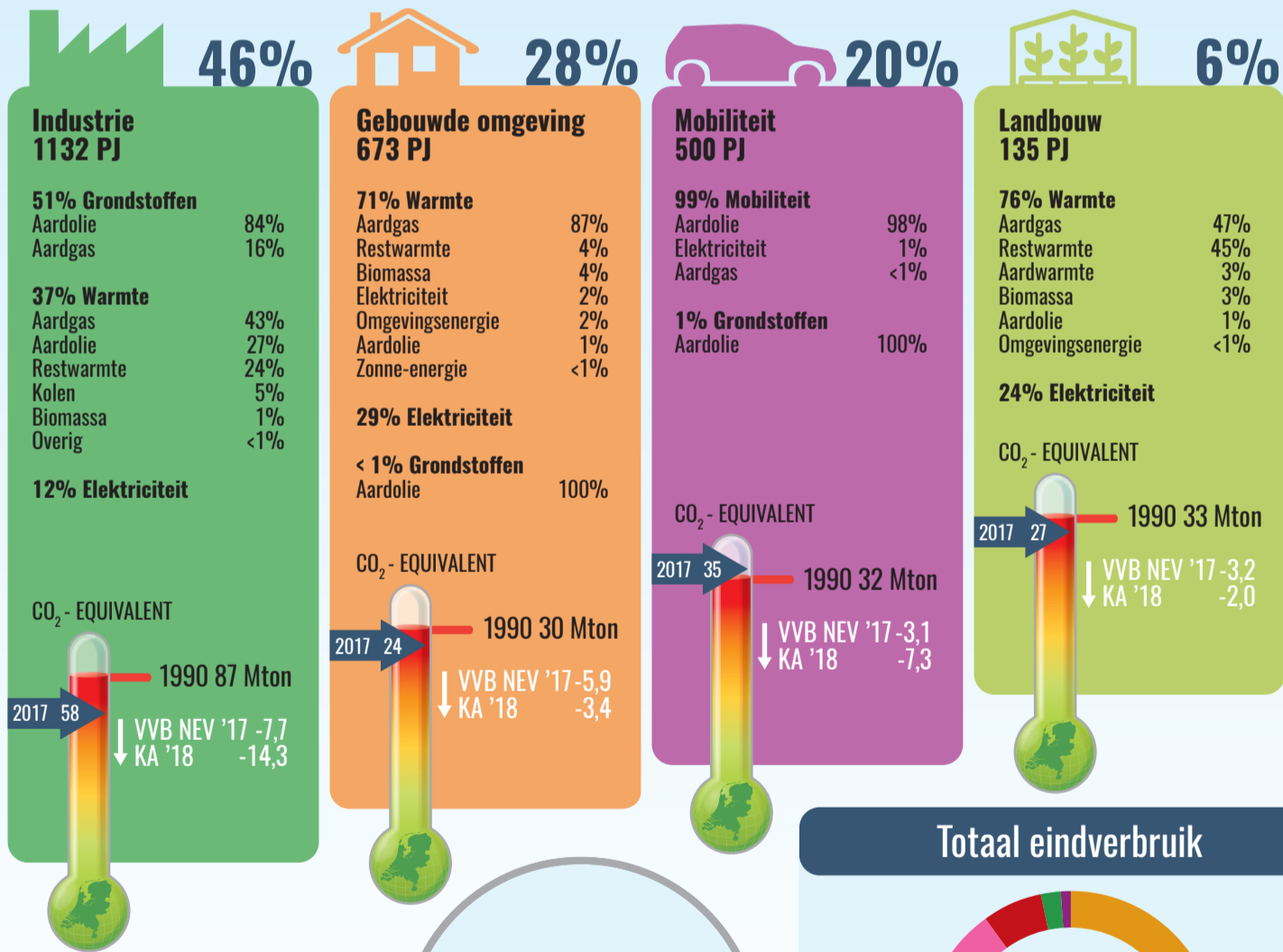
## Primair verbruik



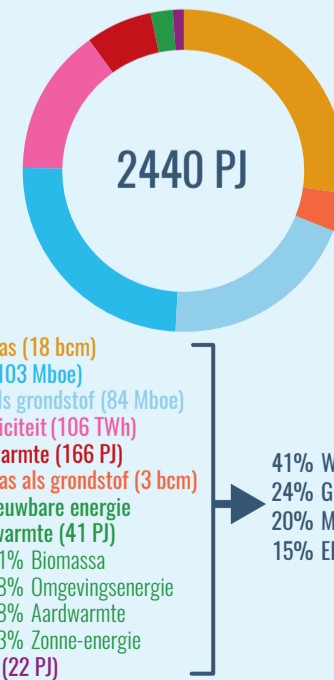
## Energieomzetting



## Eindverbruik 2440 PJ



## Totaal eindverbruik



## Gas- en elektriciteitsverbruik

